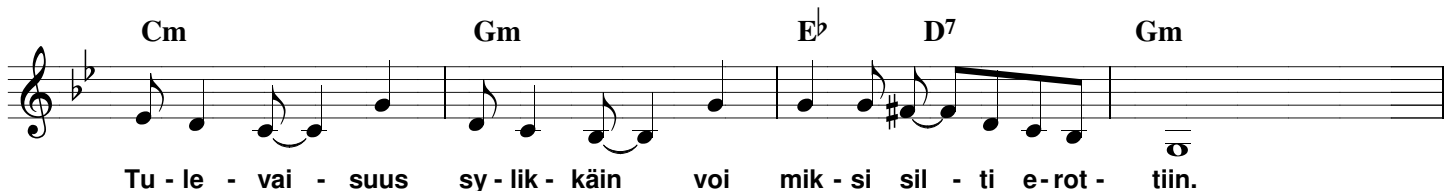
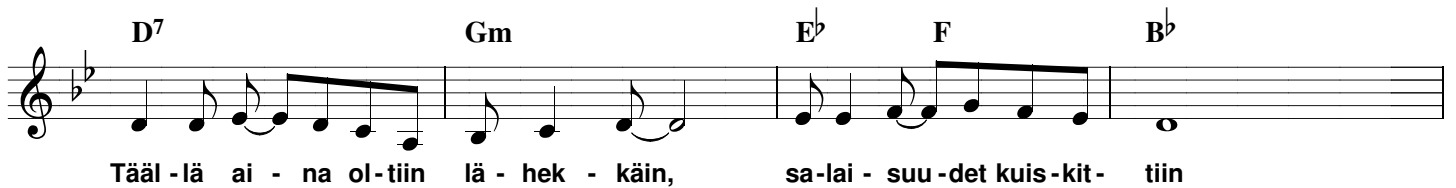
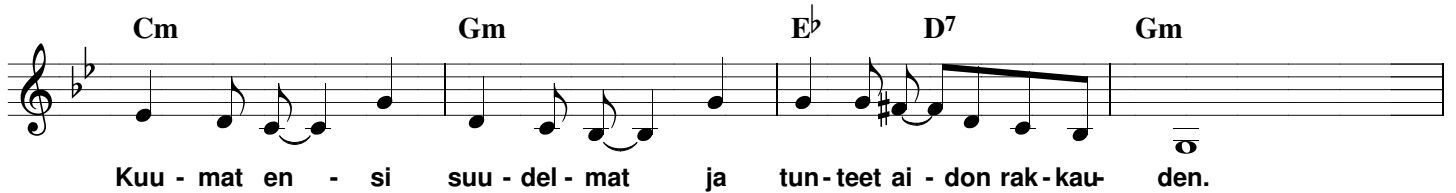
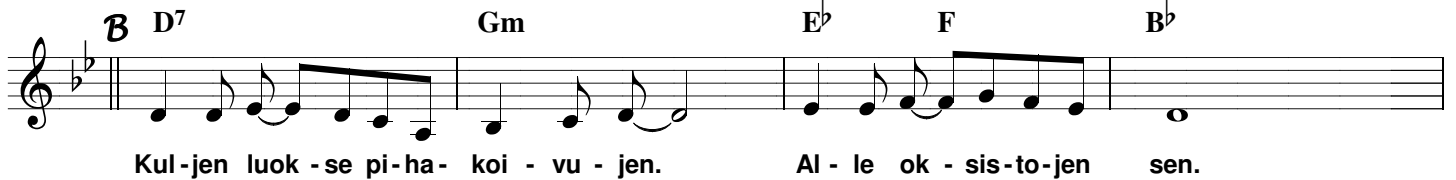
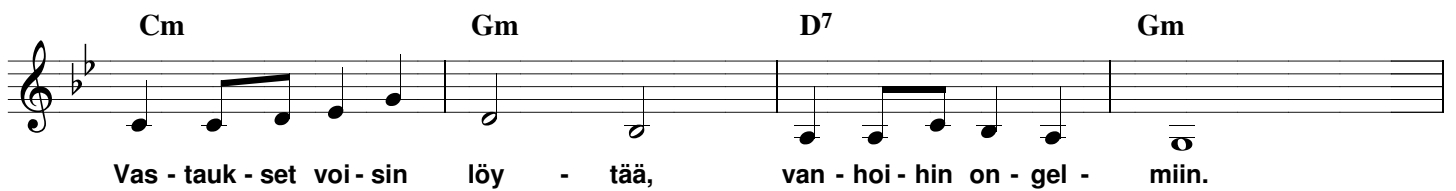
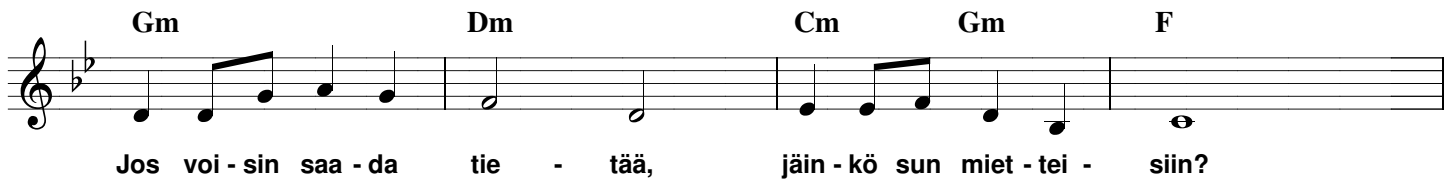
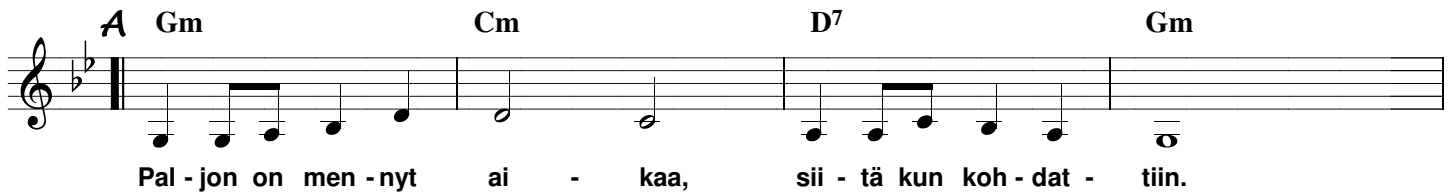
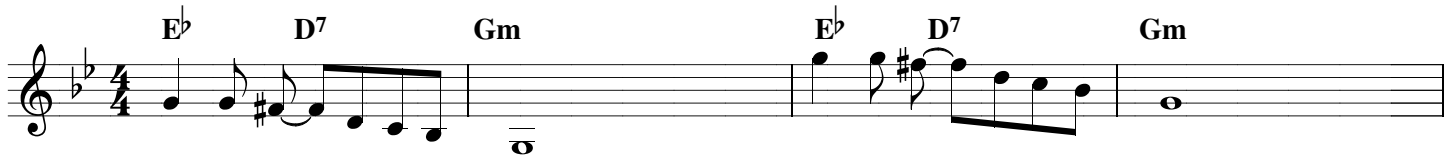


# KULJEN LUOKSE PIHAKOIVUJEN

SÄV. AHTI NIKKONEN - SAN. BIRGITTA ÄIJÄLÄ



Gm Instr. soolo Cm D7 Gm

Bb F Cm D7

Gm Dm Cm Gm F

Hel - pos - ti meis - tä luo - vuin, sel - vää en sii - tä saa.

Cm Gm D7 Gm

Tun - teet - to - mak - si tai - vuin, sil - loin kai luo - vut - taa.

D7 Gm Eb F Bb

Kul - jen luok - se pi - ha - koi - vu - jen. Al - le ok - sis - to - jen sen.

Cm Gm Eb D7 Gm

Kuu - mat en - si suu - del - mat ja tun - teet ai - don rak - kau den.

D7 Gm Eb F Bb

Tää - lä ai - na ol - tiin lä - hek - käin, sa - lai - suu - detkuiskit - tiin.

Cm Gm Eb D7 Gm

Tu - le - vai - suus sy - lik - käin voi mik - si sil - ti e - rot - tiin, voi

Eb D7 Gm

mik - si sil - ti e - rot - tiin.